

WoodedTech Co., Ltd have been in WPC business for more than 15 years. Trough 15-years development and research, We have been one company combine R&D, design, production, marketing in one. Nowadays, WoodedTech have 20 production lines and R&D testing lab and our products are popular to many countries.

WoodedTech products provide water-proofing, fire-resistance, weathering resistance, easy installation, strong mechanical properties, so our products can used in different special fields, such as WPC marina decks, swimming decking,wpc fence , outdoor wall, landscape design etc.

Our advantages:

- 1.good quality; Own a R&D lab , can run the test for products everyday to make sure our products are first-classed.
- 2.controllable delivery date: we get 20 production lines and will increase to 30 in the following year.
- 3.experience;All the sales here have 4-5 years experience in WPC product.Can supply an efficient solutions to the problems.No matter in wpc product or export business.
- 4.complete product system; our products can include all accessories and fittings,the client can even DIY themselves.
- 5.company backup:All kind of installation guides, job reference for clients.



Why Woodedtech WPC products?

1,Excellent Workability

Can be nailed,sawed,planed,processing is simple,can be combined installation,saving time and effort, can be processed two times.

2,Stable&Durable

WPC material is not easy deformation,corrosion,mildew,antibacterial,noise,anti-UV,anti-aging,suitable for outdoor use.

3,Economical&Practical

Scale production,quality assurance,versatility,paint-free,maintenance-free,Long life up to more than 15 years.

4,Cold&Heat

High temperature of 70 degrees,low temperature resistance of-40 degrees,antistatic.

5,Health&Green

Using recycling material itself,does not contain formaldehyde,a natural wood fibers,close to humans, close to nature.

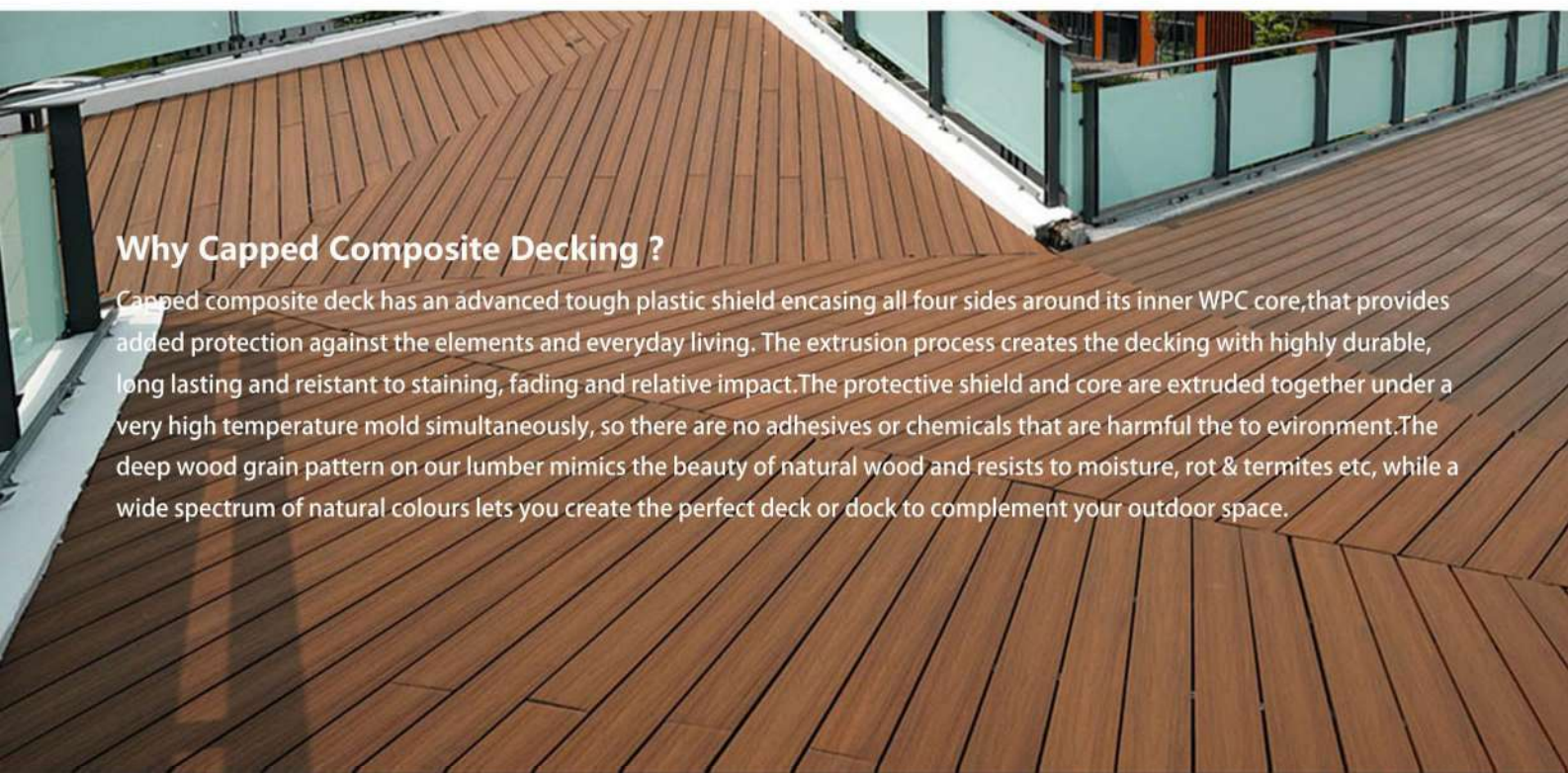




Capped Composite Decking

- Better resist to moisture and termites
- Better resist to mold and mildew
- Better resist to UV, better color stability
- High impact strength, better scratch resistance

- Less water-absorption, less rotten
- More fading and staining resistant
- More durable, more beautiful and more reliable
- Eco-friendly alternative to Wood Decks



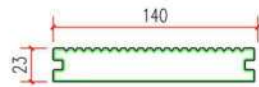
Why Capped Composite Decking ?

Capped composite deck has an advanced tough plastic shield encasing all four sides around its inner WPC core, that provides added protection against the elements and everyday living. The extrusion process creates the decking with highly durable, long lasting and resistant to staining, fading and relative impact. The protective shield and core are extruded together under a very high temperature mold simultaneously, so there are no adhesives or chemicals that are harmful to the environment. The deep wood grain pattern on our lumber mimics the beauty of natural wood and resists to moisture, rot & termites etc, while a wide spectrum of natural colours lets you create the perfect deck or dock to complement your outdoor space.



This board is made of
Approx. 90% Recycled materials
recycled wood fiber + recycled plastic

Specification



Color



Teak



Light-Grey



Antique



IPE



Redwood



Walnut

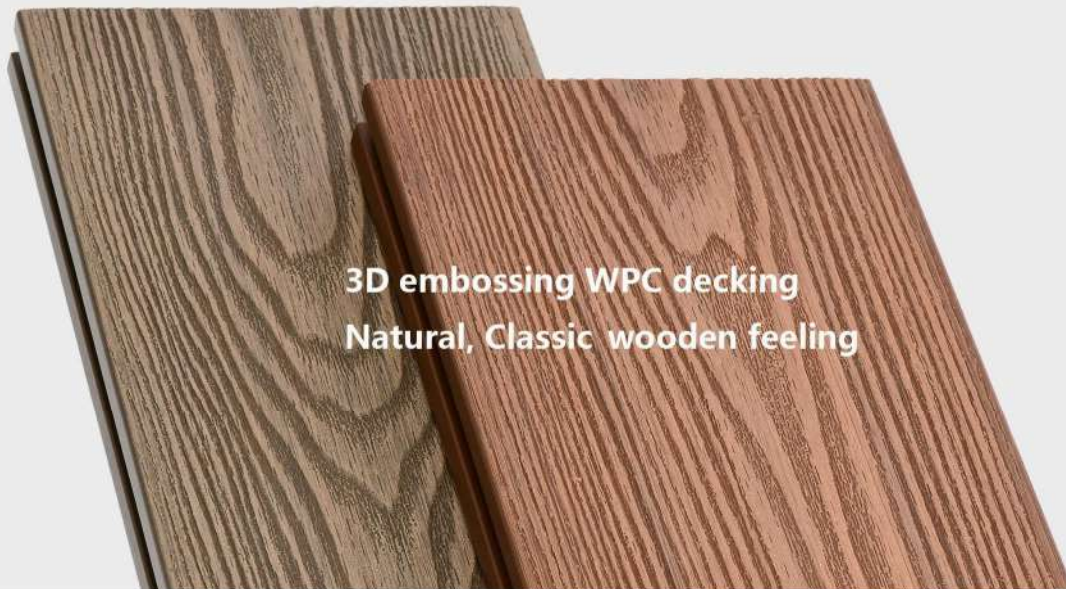
Surface Treatment



H2-Cross Wood Grain



H1-Straight Wood Grain



3D embossing WPC decking
Natural, Classic wooden feeling

Why 3D embossing decking?

Wood Plastic Composite Decking is a superior material that combines the beauty of wood with the strength and durability of a polymer. As the sustainable alternative to natural wood decks, Sundi 3D Embossing WPC Deck offers the aesthetic of natural timber and the benefits of long lasting beauty with minimal maintenance. The deep wood grain pattern on our lumber mimics the beauty of natural wood and resists to moisture, rot & termites etc, while a wide spectrum of natural colours lets you create the perfect deck or dock to complement your outdoor space.

Specification



Name: FS145H21.5
 Dimension: 145*22mm



Name: FS140H25B
 Dimension: 140*25mm



Name: FS140S25
 Dimension: 140*25mm

Color



TEAK



RED WOOD



WALNUT



CHOCOLATE

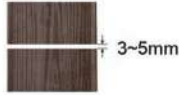


DARK GREY

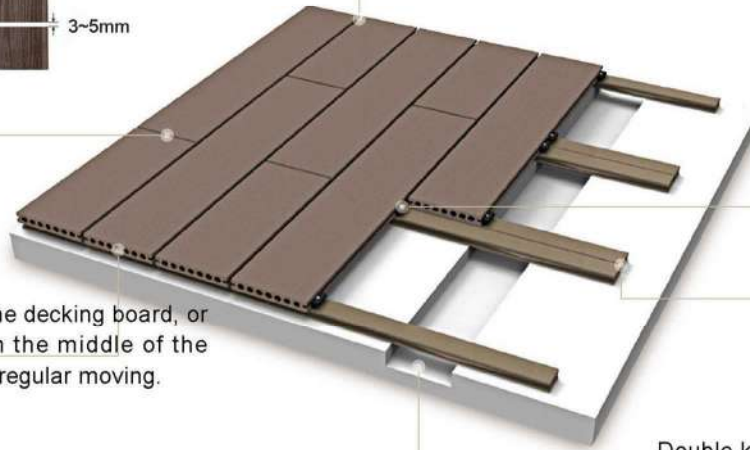


EBONY

The gap between butt joints should be around 3-5mm.



The gap between the side of adjacent boards should be around 5-7mm.



Fix the decking and keel with plastic clip.



Use one screw at the end of the decking board, or on the two sides grooves on the middle of the board in case of the decking irregular moving.

To avoid water ponding, set gutterway on the basement so that water can drain out.



Double keels are needed under the ends of two deckings, pre-drill is necessary before fixing the keel on the ground.

Decking Components



Stainless Steel Start Clip



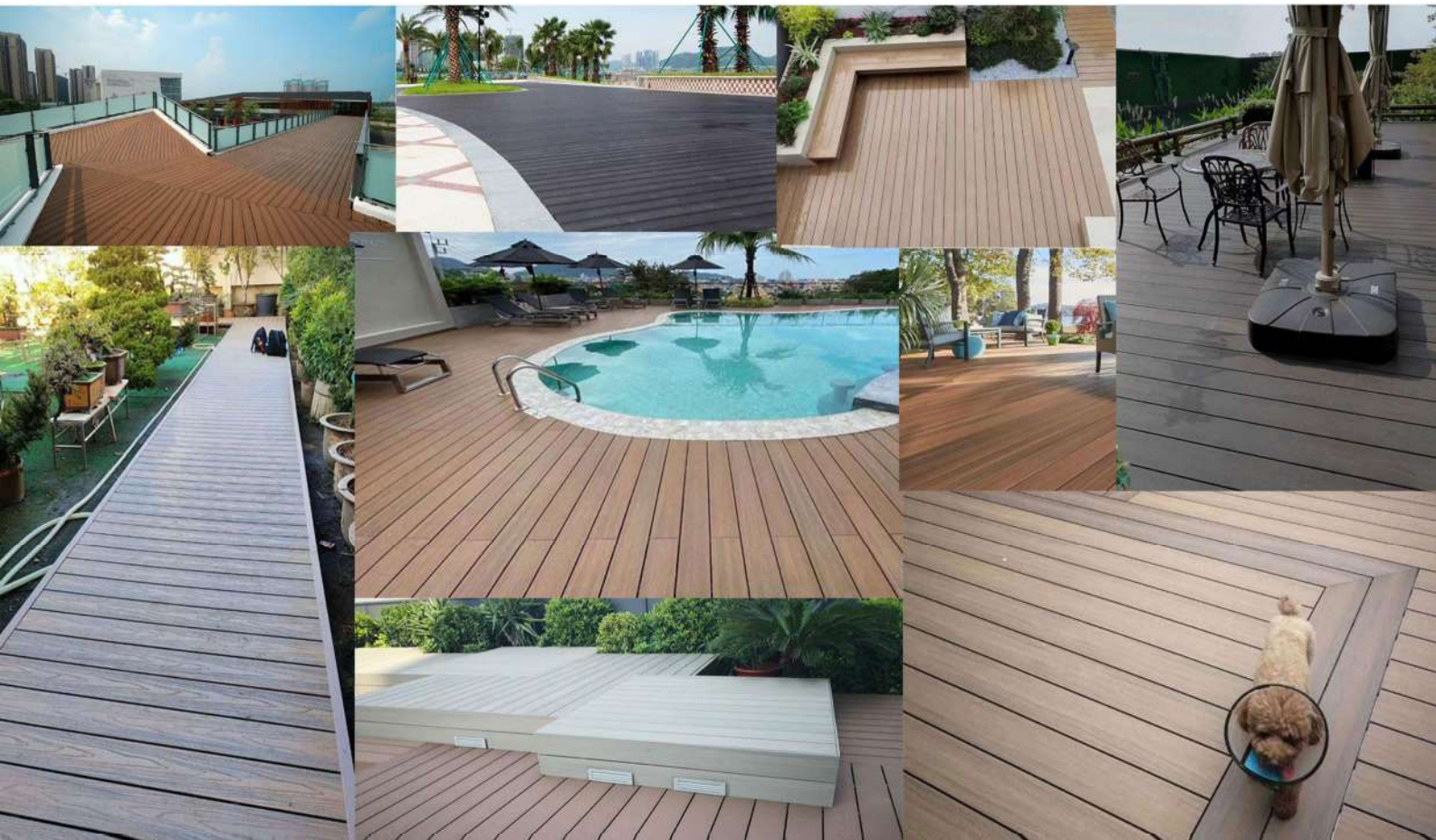
Plastic Clip



Capped L-Shape Corner Trim
Dim: 50*50*3000m



Capped Skirting Trim
Dim:71*11*3000mm



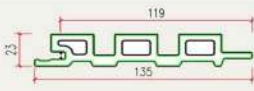
Composite Wall Cladding

The Wall Cladding has an advanced tough plastic shield encasing all four sides around its inner WPC core to provide added protection. It combines the toughness and longevity of a capped wood plastic composite with an engineered design. The extrusion process making it long lasting and ultra low maintenance with highly stain & UV resistance. It never needs staining or treating, just a regular wash down and its good as new, every time. The beauty of Slatted Composite Wall Cladding is in its simplicity. Slatted cladding has gorgeous lines and is available in six colors, It looks great and has the richness and feel of natural wood.



Specification



Profile	
Thickness	23mm
Width	135mm (Effective width 119mm)
Length	2900mm, accept customization
Joist Spacing	Max 500 mm
Surface Treatment	Brushed
Colors	6 standard colors for choice



- ✓ Better resist to moisture and termites
- ✓ Better resist to mold and mildew
- ✓ Better resist to UV, better color stability
- ✓ Low maintenance at an excellent price

- ✓ Less water-absorption, less rotten
- ✓ More fading and staining resistant
- ✓ More durable, more beautiful and more reliable
- ✓ Environmental friendly

Color



Teak



Light-Grey



Antique



IPE



Walnut



Redwood



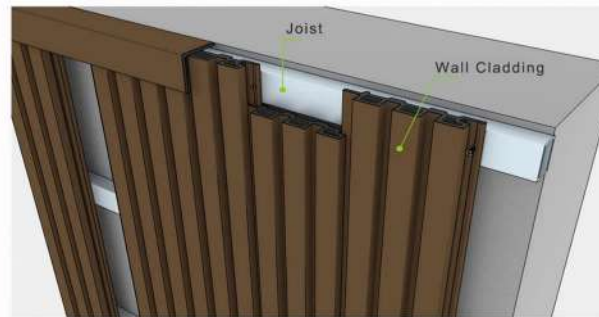
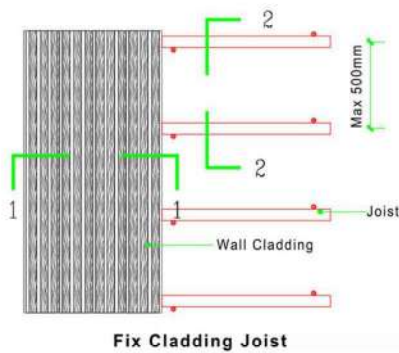
White



Black

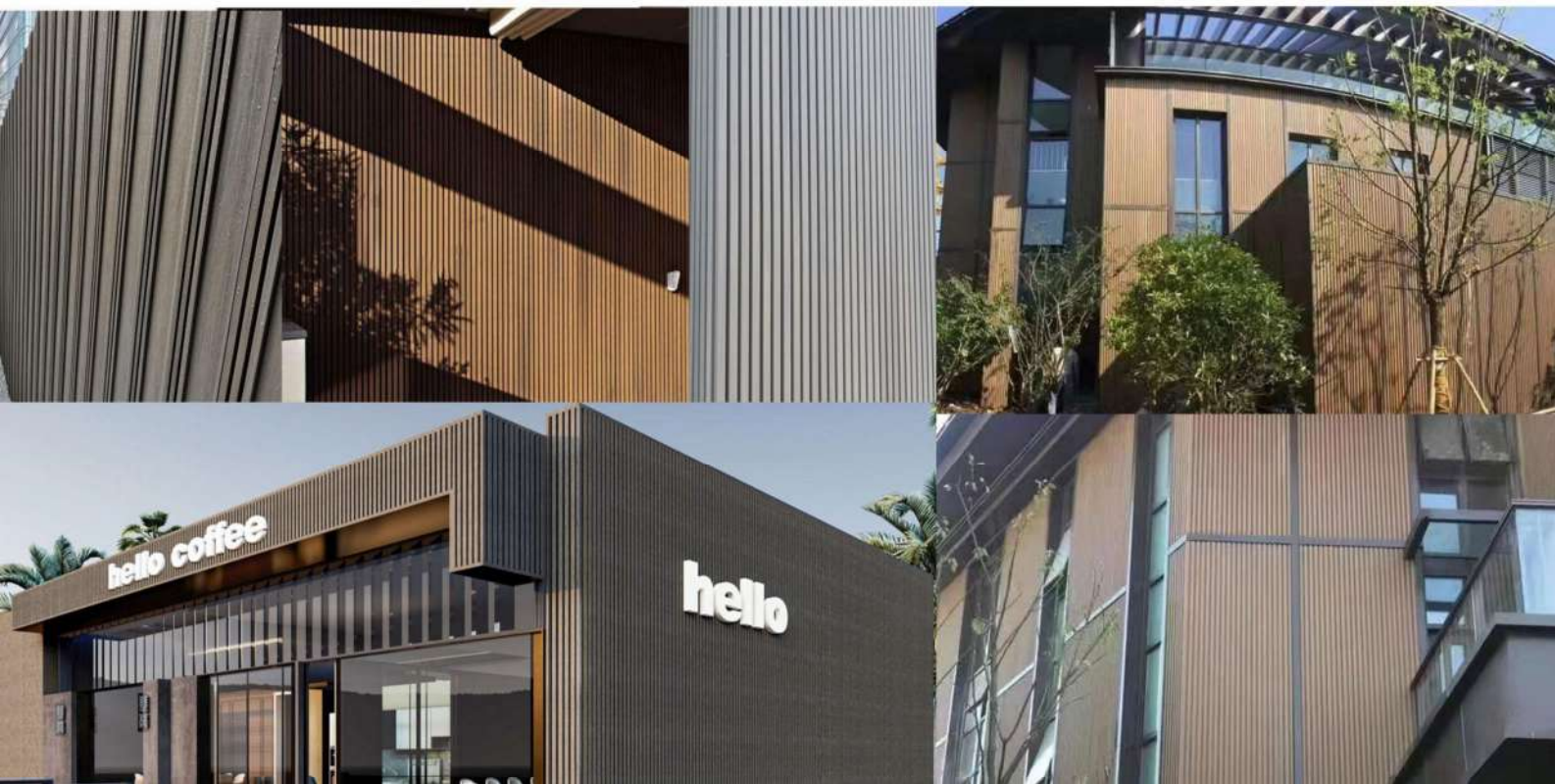
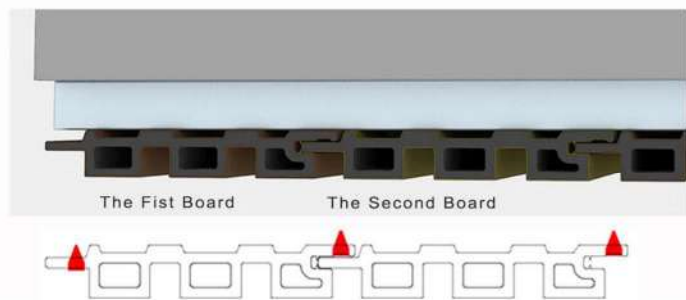
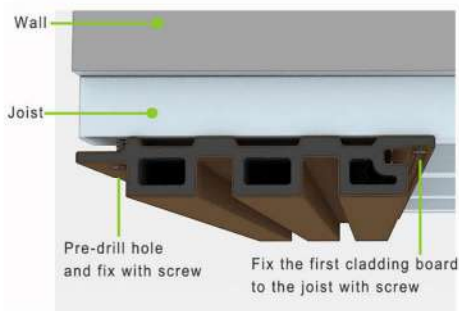
PRE-INSTALLATION

1. All composite cladding systems require a subframe network to promote both drainage and airflow and to ensure a solid structure for the cladding boards to be fixed directly onto. We provide composite joist for option; however, alternative materials like solid wood, steel or aluminum also can be used to create your subframe.
2. The joist spacings should sit at no wider than 500mm. In high wind load areas, we suggest narrowing joist centres to 400mm. Double joisting is required in areas where two cladding boards are expected to meet at butt-ends.
3. Pre-drill holes on the first board before installation to allow for expansion and contraction. Fix the first board to the joists with screw. Work along the length of the cladding board to ensure the board is fixed to every supporting joist. Pre-drilling the material and fixing with cladding screw. Repeat this process for all subsequent cladding boards. Allow for adequate expansion gaps (3-5mm) at butt-ends of cladding boards.



INSTALLATION-VERTICAL CLADDING

Composite cladding can be installed both vertically and horizontally, the installation methods behind each are the same.





WPC Post



WPC Beam and Blade



Accessories



S Type  Bevel Type  Flat Type 

For villas, gardens, colony plots, restaurants, tea posts, road side refreshment areas, Pergolas are becoming favorite because of its woody look. Made with wood flour and PE with different surfaces like 'sanded' or 'brushed' or 'embossed' pergolas are perfect replacement of conventional wooden structures.



Style1

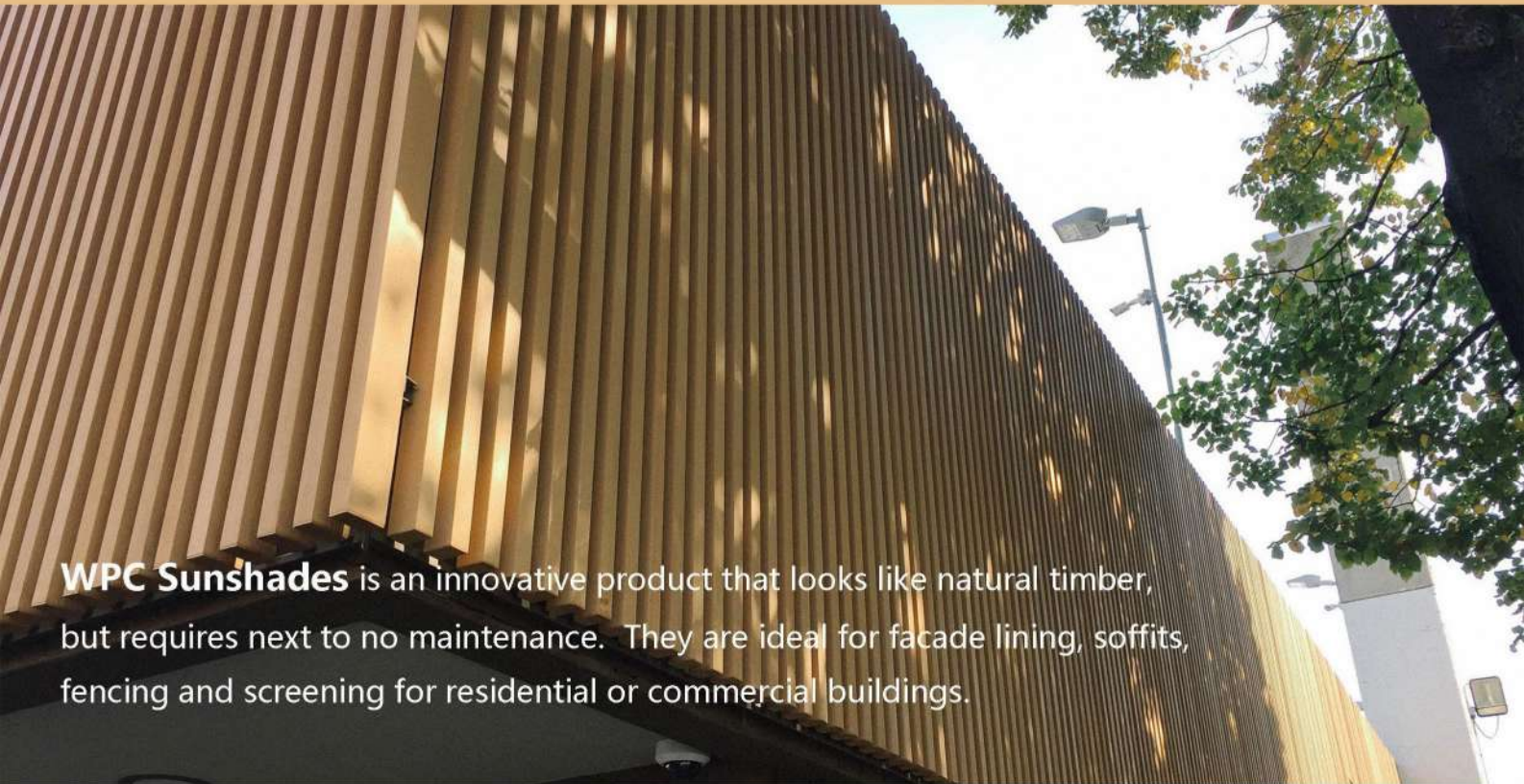


Style2

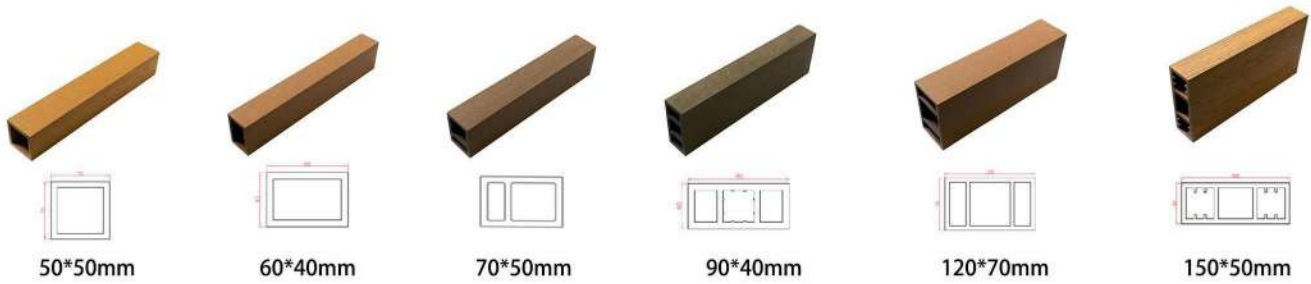


Style3





WPC Sunshades is an innovative product that looks like natural timber, but requires next to no maintenance. They are ideal for facade lining, soffits, fencing and screening for residential or commercial buildings.



Color



Installation

